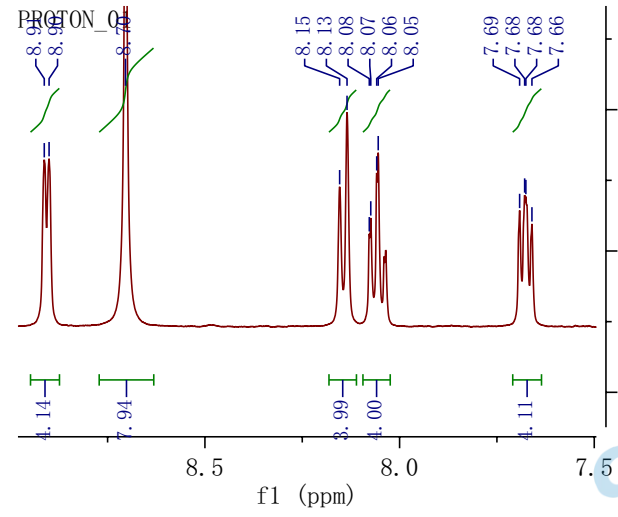


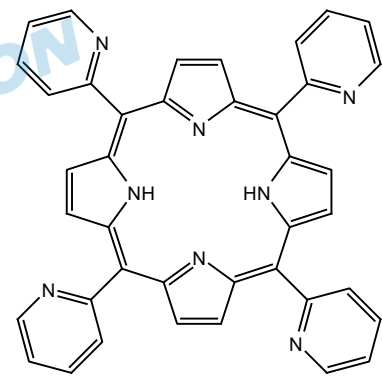
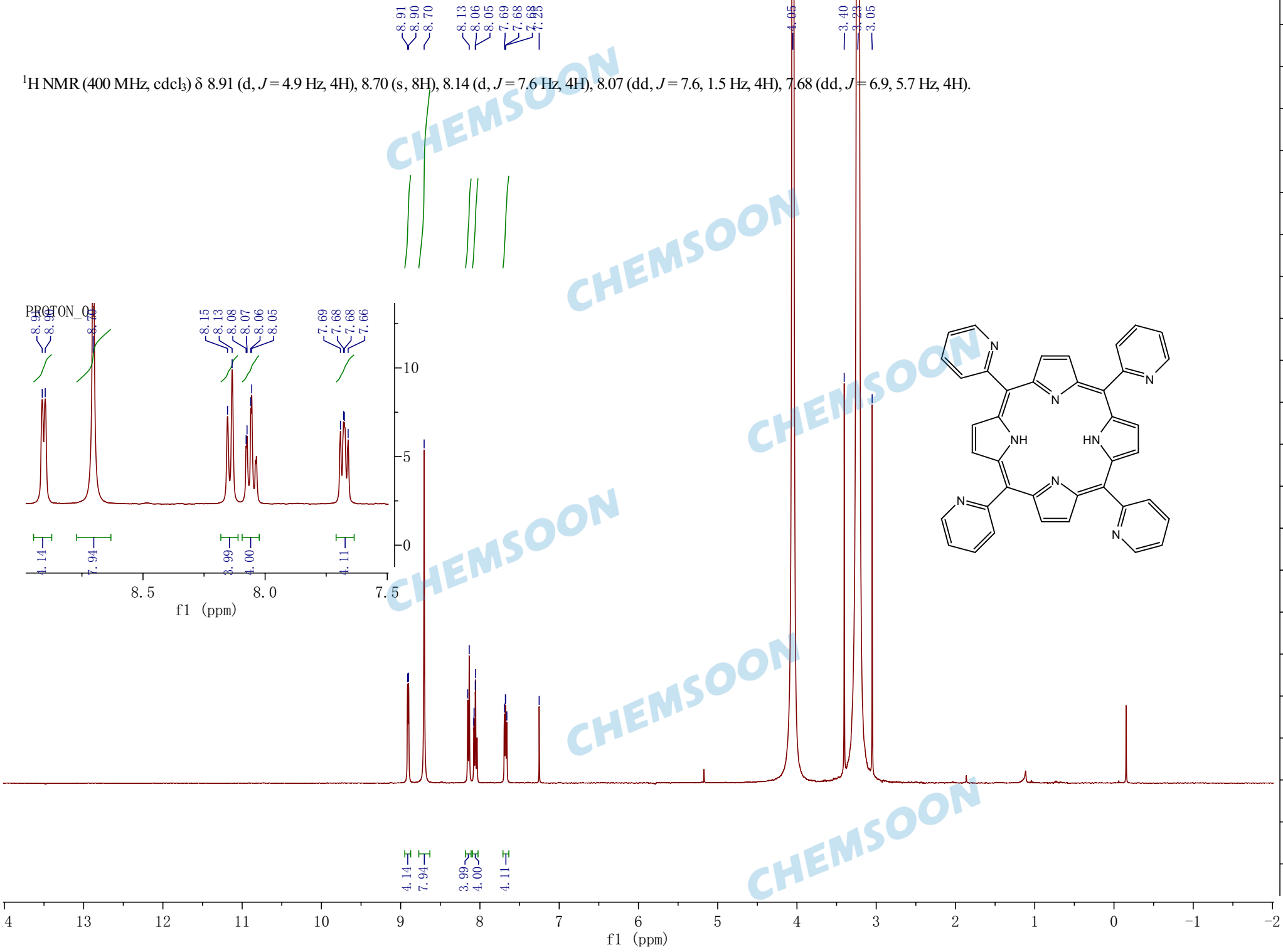
8.91
8.90
8.70
8.13
8.06
8.05
7.69
7.68
7.68

¹H NMR (400 MHz, cdcl₃) δ 8.91 (d, *J* = 4.9 Hz, 4H), 8.70 (s, 8H), 8.14 (d, *J* = 7.6 Hz, 4H), 8.07 (dd, *J* = 7.6, 1.5 Hz, 4H), 7.68 (dd, *J* = 6.9, 5.7 Hz, 4H).



4.14
7.94
3.99
4.00
4.11

4.05
3.40
3.33
3.05



f1 (ppm)