

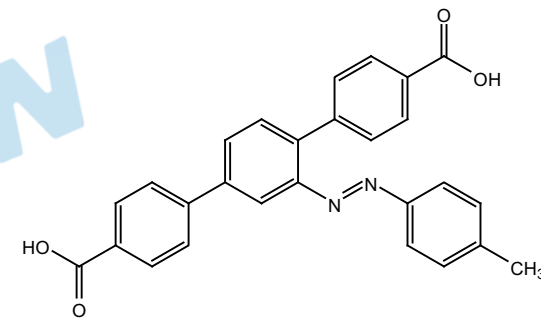
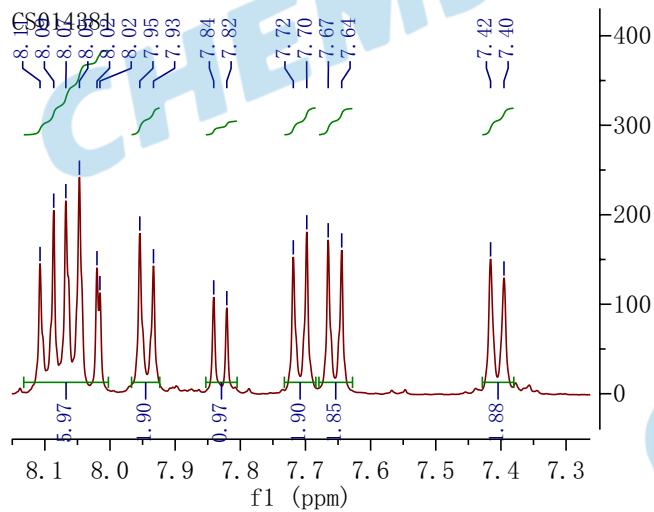
CS014381

-13.05

8.11  
8.09  
8.07  
8.05  
8.02  
7.95  
7.93  
7.84  
7.82  
7.72  
7.70  
7.67  
7.64  
7.42  
7.403.36  
2.53  
2.52  
2.51  
2.41

-0.01

$^1\text{H NMR}$  (400 MHz, DMSO)  $\delta$  8.13 – 8.00 (m, 6H), 7.94 (d,  $J=8.4$  Hz, 2H), 7.83 (d,  $J=8.0$  Hz, 1H), 7.71 (d,  $J=8.3$  Hz, 2H), 7.65 (d,  $J=8.3$  Hz, 2H), 7.41 (d,  $J=8.2$  Hz, 2H), 2.41 (s, 3H).



16 15 14 13 12 11 10 9 8 7 6 5 4 3 2 1 0 -1 -2 -3 -4

f1 (ppm)