

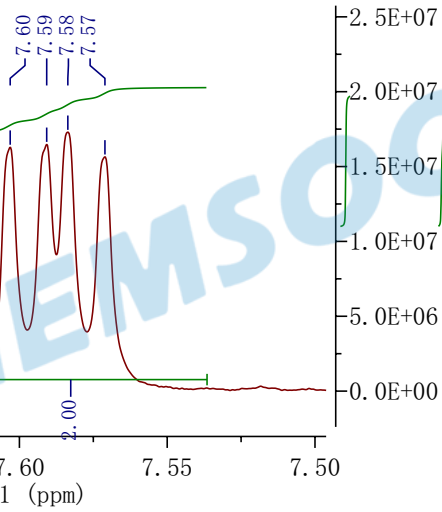
CS014712

9.88 9.83 8.93 8.91 8.90 8.90 7.60 7.59 7.58 7.57

1.60 1.25

$^1\text{H NMR}$  (400 MHz,  $\text{CDCl}_3$ )  $\delta$  9.88 (d,  $J = 1.6$  Hz, 2H), 8.96 – 8.86 (m, 4H), 7.59 (dd,  $J = 7.8, 5.0$  Hz, 2H).

CS014712



CS014712

