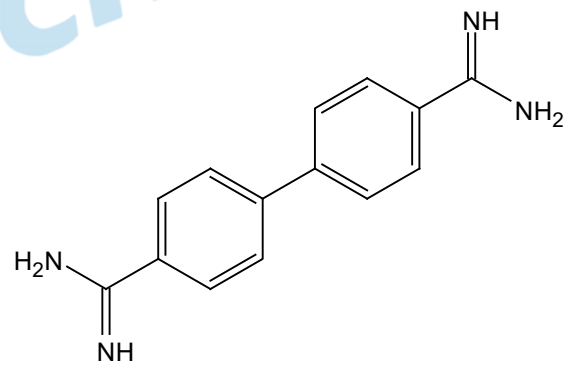


CS014442

$^1\text{H NMR}$  (400 MHz,  $\text{dms-}d_6$ )  $\delta$  9.37 (d,  $J = 85.7$  Hz, 8H), 8.04 (d,  $J = 8.3$  Hz, 4H), 7.98 (d,  $J = 8.4$  Hz, 4H).



9.48  
9.26  
8.05  
8.03  
7.99  
7.97

3.31

2.48

-0.02

H-Cl  
H-Cl

8.27

4.00  
3.96

15 14 13 12 11 10 9 8 7 6 5 4 3 2 1 0 -1 -2

f1 (ppm)

550  
500  
450  
400  
350  
300  
250  
200  
150  
100  
50  
0  
-50