

CS018395

$^1\text{H NMR}$ (400 MHz, CDCl_3) δ 9.32 (s, 2H), 8.98 (s, 4H).

9.32

8.98

7.26

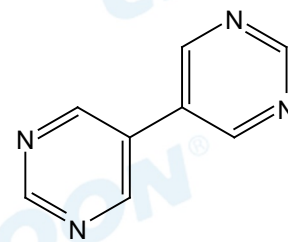
1.86

1.23

-0.03

1.94

4.00



f1 (ppm)

1.10E+08

1.00E+08

9.00E+07

8.00E+07

7.00E+07

6.00E+07

5.00E+07

4.00E+07

3.00E+07

2.00E+07

1.00E+07

0.00E+00

-1.00E+07